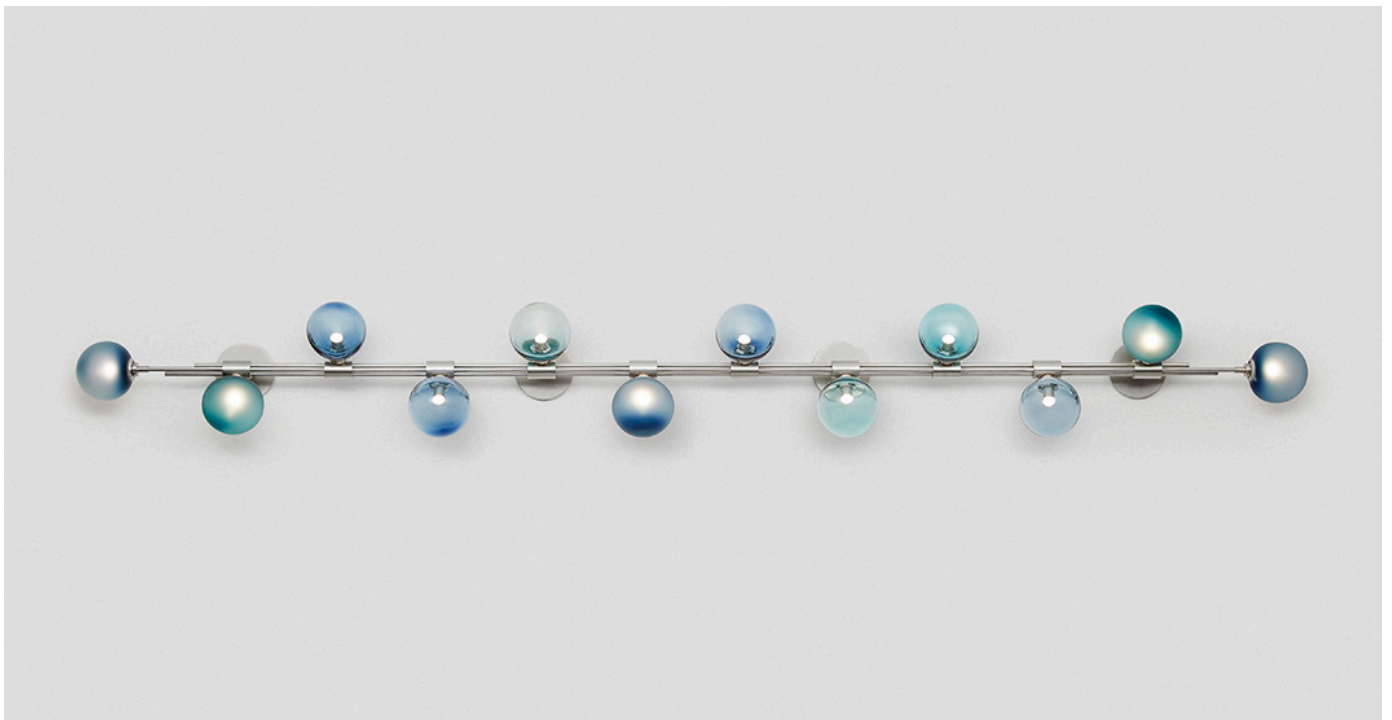


TRILOGY COLLECTION  
HORIZONTAL WALL SCONCE

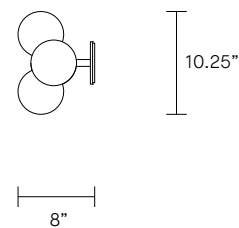
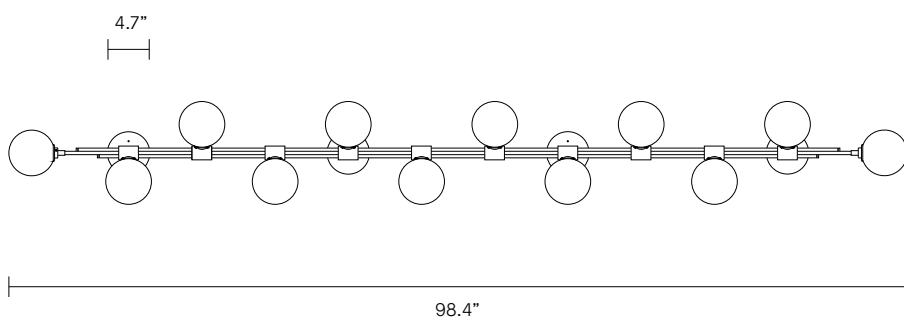
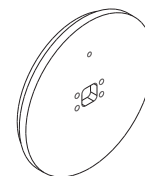
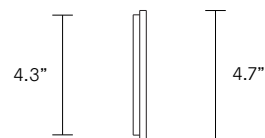
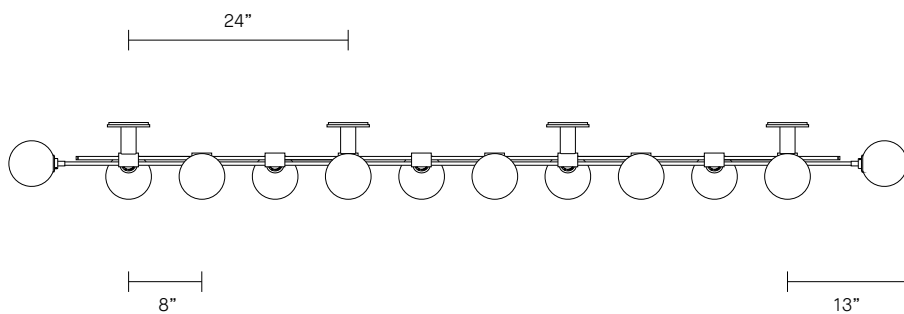
UL SPECIFICATION SHEET  
NORTH AMERICA



ARTICOLO

TRIOLOGY COLLECTION  
HORIZONTAL WALL SCONCE

UL SPECIFICATION SHEET  
NORTH AMERICA



TR\_HWS\_UL\_20V1

**ABOUT TRIOLOGY**

Trilogy collection exemplifies contemporary sophistication of yesteryear drawing from art deco imaginings with staggered rods and jewel like cuff detailing.

The Trilogy Horizontal Wall Sconce is a customisable lighting installation that peppers the delicate beauty of mouthblown glass along a finely crafted solid-metal spine.

Initially conceived as a vertical pendant, this horizontal reimagining lengthens its core to house up to 12 glass orbs, each sphere floating with elegance and grace.

Available in wall sconce and pendant options.

**LEAD TIME**

8 - 10 weeks

**LIGHT SOURCE**

12 x 12V G4 LED Bi-Pin 2.5W  
2700K warm white  
3000 total lumen output  
Dimmable (upon request)  
Lamps included

**INSTALLATION**

Supplied with external drivers

**CUSTOMISATION**

Customisation of ball positions available

**WEIGHT**

57 lb

**CERTIFICATION**

US/ETL/CA

**WARRANTY**

3 years

**FITTING FINISHES**

Brass  
Mid Bronze  
Satin Nickel (shown)

**FITTING OPTIONS**

12 ball (shown)

**SHADE COLOURS**

Frosted White  
Tea  
Frosted Tea  
Sea Blue (shown)  
Frosted Sea Blue (shown)  
Sea Green  
Frosted Sea Green  
Drunken Emerald  
White Spoti  
Black Spoti  
Scandi